

# CBE NEW STUDENT INDUCTION

Semester 2, 2022

Associate Professor Bronwen Whiting  
CBE Associate Dean (Education)



Australian  
National  
University

# Expectations

We are all part of the ANU community, and act to uphold the University's values to support each other by:

- **fostering** and **promoting** an environment that is free from harassment, discrimination and violence
- acting with **integrity** and showing **respect** for one another
- taking **care** of our own **safety** and the safety of others
- complying with the **law** and University rules, **policies** and **procedures**.

Image credit: The Australian National University



# COVID-19 safety

It is **your responsibility** to be COVID-safe on campus. You must:

- Wear a mask indoors.
- Maintain good hand hygiene.
- Be mindful of social distancing – maintain 1.5 metres of physical distance from others where possible.
- Stay home if you are feeling unwell and get tested if you have any symptoms of COVID-19.
- Let the University know if you test positive to COVID-19.

## Remember:

- Face-to-face teaching will continue while the ANU COVIDSafe Alert Level remains 'Medium'.
- You will be updated if there are any changes to the teaching delivery method of your CBE program.

## Find out more:



# ANUOK app

Both on and off campus, the ANUOK app can give you access to a range of security and support services 24/7.

- Have easy access to numbers for ANU Security and Emergency Services.
- Go straight to support resources for health, counselling, legal, etc.
- Request a safety escort.
- Find where the bus is.
- Check campus maps.
- iPhone and Android.



# ANU1001

# Orientation module

This module is designed to provide useful information to help you settle in and be successful at ANU. The module will take you through a number of sections including ANU Services and frequently asked questions. It is meant to be revisited as you need it throughout your studies.

Find out more:



OR search 'ANU Orientation Module'



# Important services for new students



# ANU Student Central

ANU Student Central can help you with a range of student administration enquiries, including enrolling in your courses, understanding fees and invoices, getting your student ID card, graduation and more.

- Email: [student@anu.edu.au](mailto:student@anu.edu.au).
- Phone: **135 268** (within Australia) or **+612 6125 3339** (outside Australia).

Find out more:



Image credit: The Australian National University



# ANU Library

There are about 1.3 million records in the ANU Library Catalogue to help you access the resources you need throughout your studies.

Find out more:



Image credit: The Australian National University





# ANU Academic Skills

The ANU Academic Skills team help students develop the key academic skills and communication strategies that are foundational to all university study.

- Assistance for **all students** from first year undergraduate to final year PhD.
- Support with writing essays, reports and other assignments.
- Peer writing drop-in sessions.
- Workshops on study skills from reading difficult texts to correct referencing.
- Help with adjusting to university.
- English conversation groups.

Find out more:



# ANU Counselling

- Free.
- No referral required.
- Telehealth virtual appointments.
- Confidential and professional.
- Group programs and weekly mindfulness sessions via Zoom.
- Web resources to help you settle into your university studies.

Find out more:



Image credit: The Australian National University



# Medical services

The University's on-campus medical service is located on Levels 2 and 3 of the Health and Wellbeing Centre, Building 156, in Kambri.

## Assistance available:

- General health check-ups and immunisations.
- Telehealth appointments.
- Minor wound management and minor surgical procedures.
- Mental health care plans and on-site bulk-billed psychologist.
- Medical assessments and pre-employment medicals.

Phone: +61 2 6125 2211

Find out more:



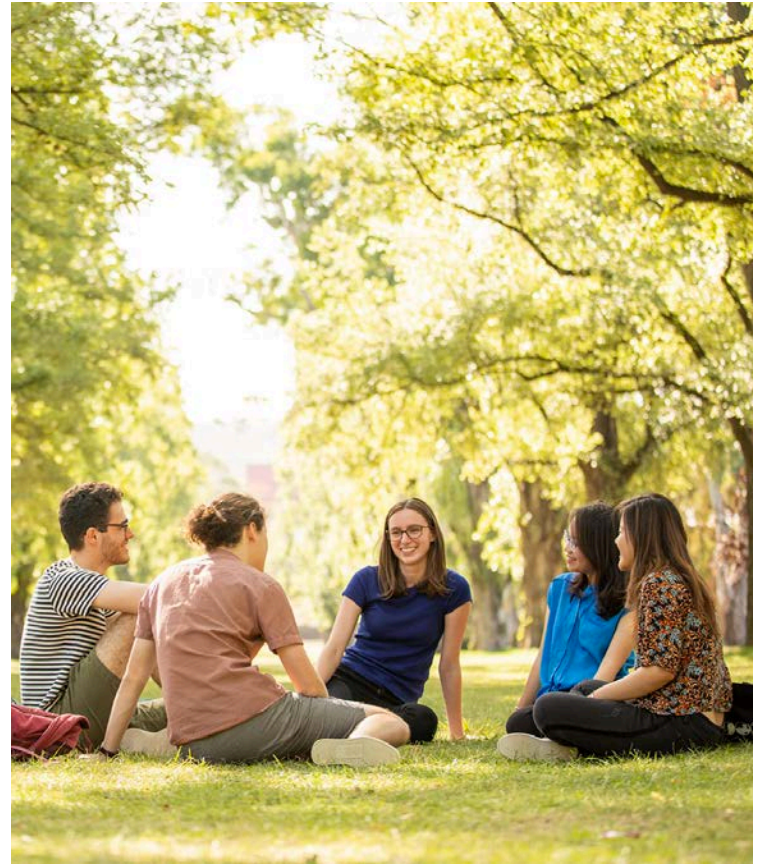
# Respectful Relationships Unit

- Advice if you or someone you know has experienced sexual assault or harassment on campus or in the community.
- Connections to support services.
- Respectful Relationships Student Ambassador program.
- Email: [respect@anu.edu.au](mailto:respect@anu.edu.au).

Find out more:



Image credit: The Australian National University



# Access and Inclusion

Access and Inclusion supports students within the ANU community whose participation in academic studies is impacted by physical and learning disabilities, mental-health conditions, chronic-medical conditions and short-term illnesses or conditions.

## Access and Inclusion also support:

- Carers
- International students under 18
- Elite athletes

If your circumstances are listed above and you require support to achieve your academic goals, please visit the Access and Inclusion website to find out about registering.

**Location:** Division of Student Administration and Academic Services, Di Riddell Student Centre (Level 3), Kambri

Find out more:



# Special Exam Arrangements (SEAs)

Semester 2 deadlines to renew Education Access Plans (EAPs) and request SEAs:

- Mid-semester exams: **Friday 12 August 2022**
- End of semester exams: **Friday 14 October 2022**

Students who do not inform Access and Inclusion within this timeframe, should be aware that failure to do so, will result in your SEAs not being implemented for the examination period.

Brand new registrations after deadlines are considered on a case-by-case basis.

It is your responsibility to ensure that you have a valid EAP in place with Access and Inclusion **at least two (2) weeks prior to examination periods** if you want SEAs, and that you contact your Course Convenor to arrange your SEAs.



# The Tjabal Centre

The Tjabal Indigenous Higher Education Centre provides a meeting place and support base for Aboriginal and Torres Strait Islander students studying at ANU.

**Location:** Building 12, Melville Hall, Ellery Crescent

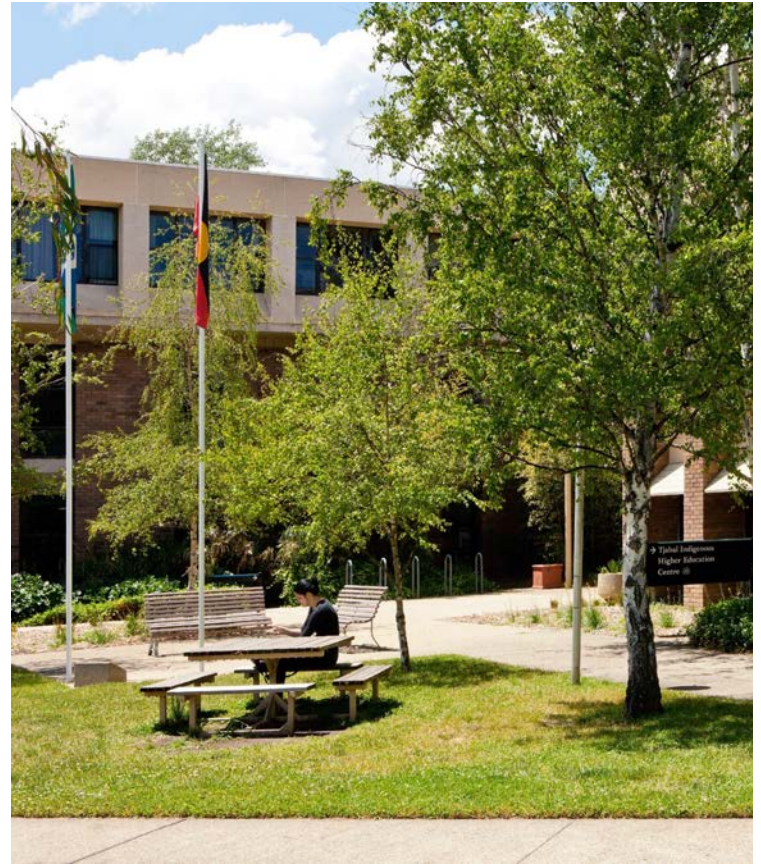
**Email:** [tjabal.centre@anu.edu.au](mailto:tjabal.centre@anu.edu.au)

**Phone:** +61 2 6125 4038

Find out more:



Image credit: The Australian National University



# ANU Students' Association (ANUSA)

ANUSA is the peak representative body for all ANU undergraduate students. If you are an undergraduate student at ANU, you are automatically a member of ANUSA.

## Social

With over 130 clubs and societies, ANUSA organises a range of social events.

## Support

ANUSA provides vital legal, welfare and assistance services to students.

Image credit: The Australian National University





# ANUSA Student Assistance Unit can also help with:

- academic issues
  - financial issues
  - emergency accommodation
  - referrals
  - ... and more.
- **Phone:** +61 2 6125 2444
  - **Email:** [sa.assistance@anu.edu.au](mailto:sa.assistance@anu.edu.au)
  - **Facebook:** /ANUStudentsAssociation
  - **Location:** Level 2, Di Riddell Student Centre, Building 154, Kambri

Find out more:



# Postgraduate and Research Students' Association (PARSA)

PARSA is the peak representative body for all ANU postgraduate students. If you are a postgraduate student at ANU, you are automatically a member of PARSA.

PARSA organises social events and offers support services for postgraduate students at ANU.

## Social

PARSA organises a range of social events.

## Support

PARSA services include information and advice on legal issues, migration and visas, welfare and finances.

Image credit: The Australian National University



# PARSA can also help with:

- academic issues
  - financial issues
  - emergency accommodation
  - referrals
- ... and more.

- **Phone:** +61 (02) 6125 4187
- **Email:** [parsa@anu.edu.au](mailto:parsa@anu.edu.au)
- **Location:** Level 2, Di Riddell Student Centre, Building 154, Kambri

Find out more:



# Important information about CBE

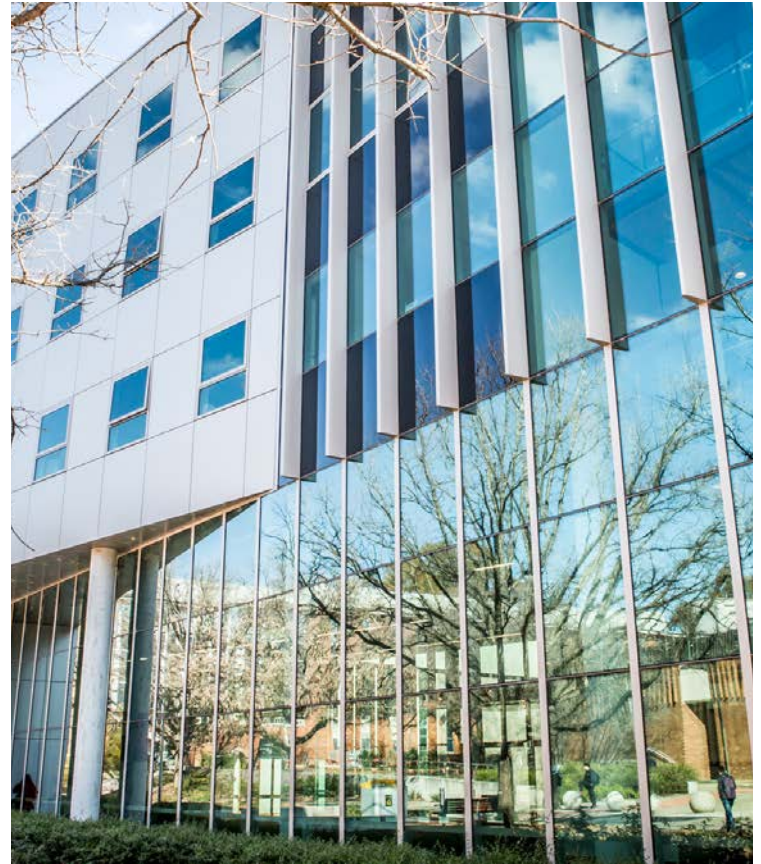


# ANU College of Business and Economics

The College comprises four research schools.

- Research School of Accounting (RSA).
- Research School of Finance, Actuarial Studies and Statistics (RSFAS).
- Research School of Management (RSM).
- Research School of Economics (RSE).

Image credit: The Australian National University



# Student experience

- Social and networking events where you can meet fellow CBE students.
- Opportunities to learn about university life, Canberra, and the region through fun and cultural activities.
- Connect with ANU and CBE student associations.
- Learn about ANU Sport and other services.

Image credit: The Australian National University



# Connect with us

Make sure you check your ANU email address.  
This is the one with your uni ID number and looks like  
[uxxxxxx@anu.edu.au](mailto:uxxxxxx@anu.edu.au)

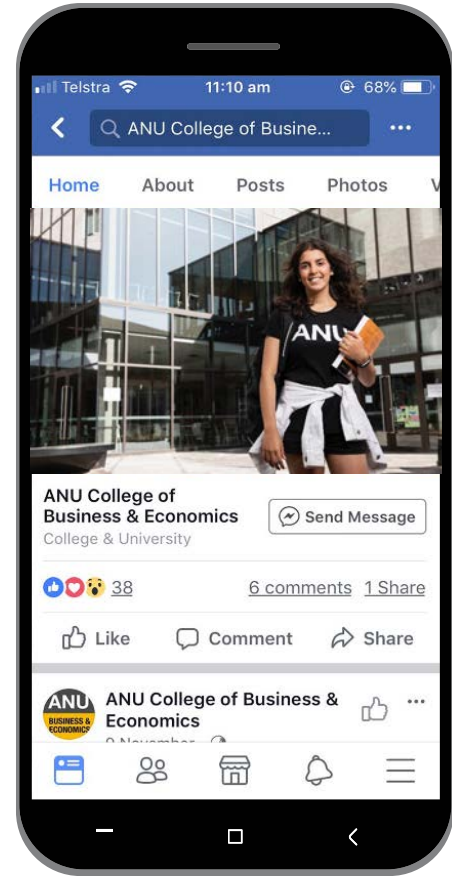
Follow CBE on:

Facebook: /ANUBusinessEconomics

Twitter: @ANU\_CBE

Instagram: @ANU\_CBE

LinkedIn: /school/anu-college-of-business-and-economics



# CBE Director of Students and Learning

**Associate Professor Marvin Wee**  
[directorsl.cbe@anu.edu.au](mailto:directorsl.cbe@anu.edu.au)





# CBE Student Services team

Your CBE Student Services team are here to support you throughout your studies.

## They can:

- advise you regarding your choice of courses and program planning
- make sure you can complete your program on time
- assist you if you are considering changing your program
- be first point of contact for questions or further information on your studies, university services or other concerns.



# Come and speak with your student advisor

**Drop-in sessions  
O-Week – Week 3**  
Your CBE Student Advisors are here to help you if you have any enquiries about your studies.

You can register on ANU CareerHub or via our CBE website.

## Online sessions for undergraduate students

Tuesday 19 July, 2–3pm (AEST)  
Friday 22 July, 2–3pm (AEST)  
Thursday 28 July, 2–3pm (AEST)  
Friday 5 August, 2–3pm (AEST)

## Online sessions for postgraduate students

Tuesday 19 July, 3.30–4.30pm (AEST)  
Friday 22 July, 3.30–4.30pm (AEST)  
Thursday 28 July, 3.30–4.30pm (AEST)  
Friday 5 August 3.30–4.30pm (AEST)



# Contacting CBE Student Services

Email: [info.cbe@anu.edu.au](mailto:info.cbe@anu.edu.au)

(you must use your ANU email account).

**Remember to include this information:**

- Your ANU ID number.
- Details of your situation (for example, you may need assistance confirming your enrolment selection).
- Which options you are considering and need assistance with.

**Make an appointment:**

**CBE Student Advisors provide advice on the following:**

- General enquiries
- Study plans
- Overseas exchange, study tours, or cross-institutional studies
- Internships or other professional opportunities
- Graduation assessment
- Program leave
- College completion letters.

You can make an appointment in person or via Zoom, book at ANU CareerHub.



# CBE Careers team

Your CBE Career and Student Employability team are ready to help you successfully navigate the professional landscape and achieve employment success in the global market.

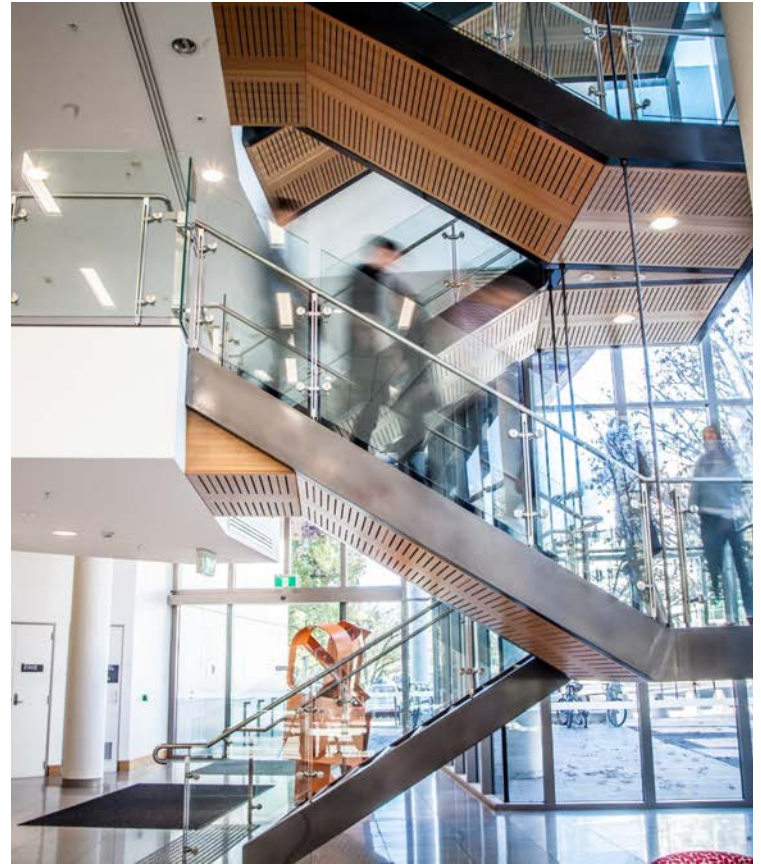
They offer one-on-one career consultations as well as professional development, employer and career events throughout the semester that provide assistance with:

- career planning
- job search strategies
- resume review
- job applications
- interview preparation
- linkedIn and networking.

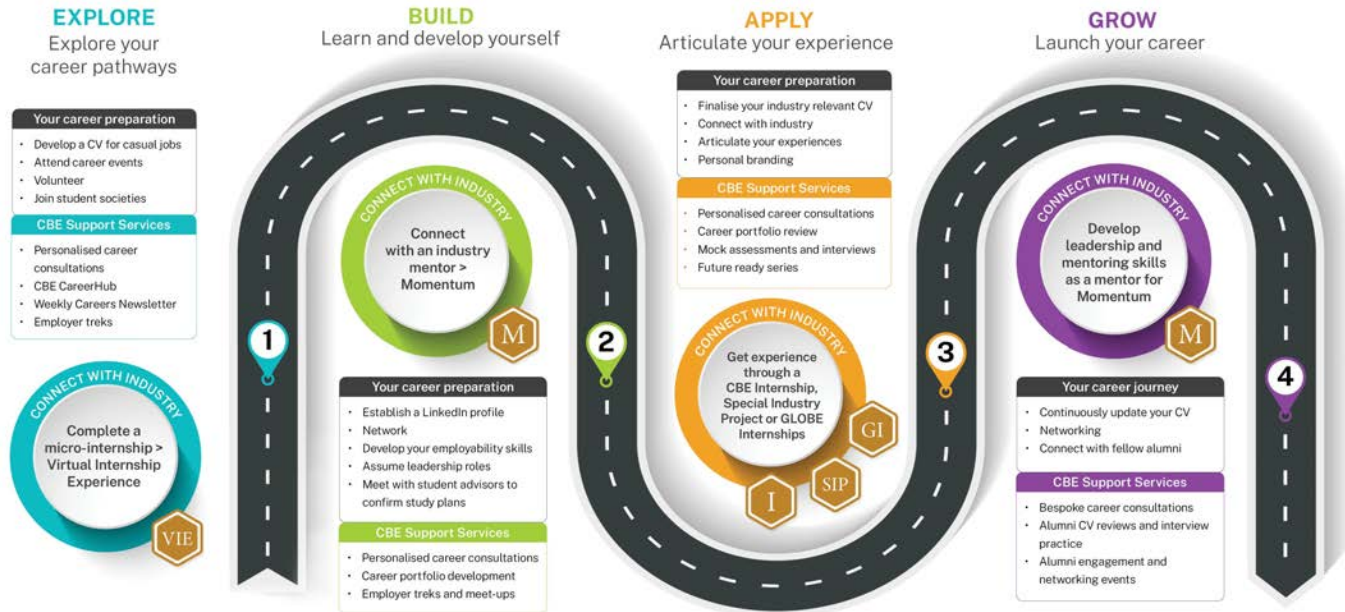
## Upcoming careers events and connection opportunities

- Finding casual work in Australia
- Alumni panel with international graduates
- CBE Future Ready Series
- Speed interviews with industry
- EY
- PwC
- Accenture and more!

Image credit: The Australian National University



# Through tailored services, the Careers team can help you map out your career.



careers.cbe@anu.edu.au - - - - -



# ANU CareerHub

ANU CareerHub is your central online career development and employability tool.

## Access:

- online jobs board
- appointment bookings
- employer and career events
- careers resources.

To login, you'll require your University ID and password, much like when you're logging onto other University systems such as Wattle or ISIS.

## Visit:



Image credit: The Australian National University



# Enhancing your employability

Now is the time to start developing your employability. Look into:

- ANU+
- Student societies
- Get a casual or part-time job
- Look into internships
- Mentoring programs
- Attend events, workshops, public lectures

## CBE Employability initiatives include:

For course credit

- CBE Internships
- Special Industry Project  
(Undergraduate students only)

Non-for credit services

- Momentum
- Virtual Internship Experience
- GLOBE

Find out more:

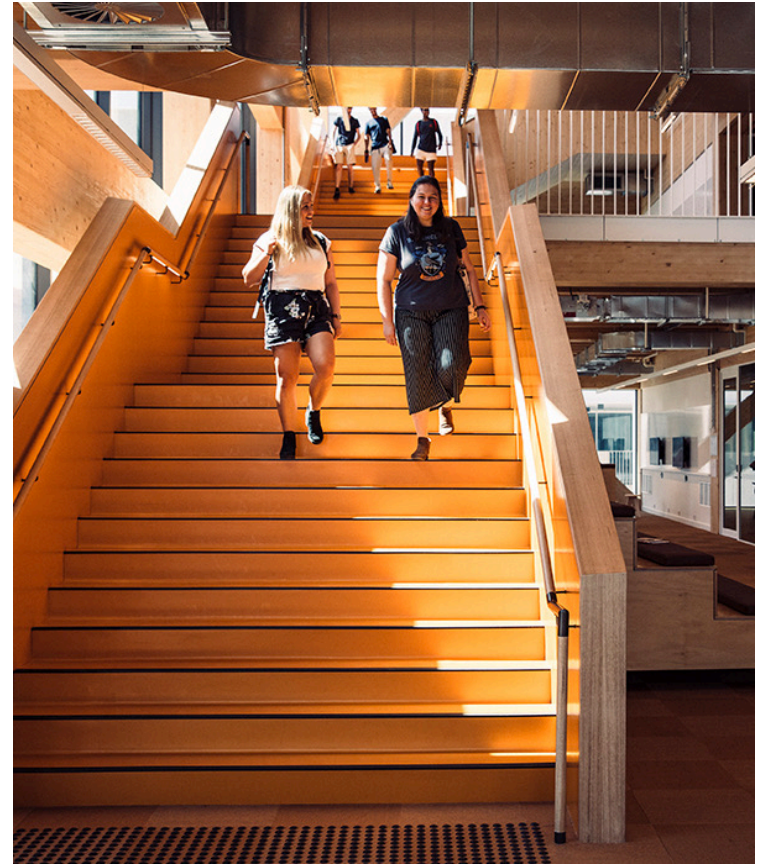


Image credit: The Australian National University



# Career service for China job market



**Jessie Zhao**

[Qi.zhao1@anu.edu.au](mailto:Qi.zhao1@anu.edu.au)

Jessie Zhao – Employability & Industry Engagement Officer

4 years working experience on Career consultation

8+ years' experience in HR full function in MNCs

Master degree of Economics and Bachelor degree of Science

Based in ANU China Office in Beijing

## How can Jessie support you?

- **Workshops** focusing on resume writing, interview preparing and China job market – Careerhub.
- **Student appointment** via zoom – suggestions on job search, resume, interview, career planning, etc.

Scan and click “访问文章”





# Important O-Week sessions to attend

## CBE discipline and major-specific information sessions

These sessions will be held on Thursday 21 July.

Be sure to check the CBE O-Week webpage to:

- find out when the discipline and major-specific session relevant to your studies will be held.
- find details on other CBE O-Week activities, including CBE Student Services drop-in sessions.
- access other recordings on induction information.

For more information and to register for CBE O-Week events:



# Thank you

Associate Bronwen Whiting  
CBE Associate Dean (Education)

**Email:** [bronwen.whiting@anu.edu.au](mailto:bronwen.whiting@anu.edu.au)

For information on upcoming CBE students events, keep an eye on our Events page:

