

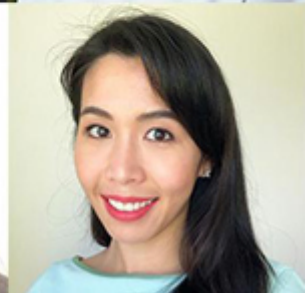
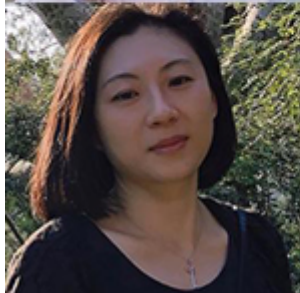


Australian
National
University

ANU College of Business and Economics (CBE) alumni update



Celebrating
CBE alumnae



International Women's Day

CBE recognise and celebrate the accomplishments of our alumnae, who are excelling in their fields, sharing their expertise, and making extraordinary contributions – each and every day.



Australia Day Honours 2022

Congratulations to the CBE alumni recognised for their accomplishments.

Dr David Gruen – Officer of the Order of Australia

Jessica Morrison – Medal of the Order of Australia

James Murray – Commendation for Distinguished Service

Rod Sims – Officer of the Order of Australia



CBE CAN launch – 30 March

As part of [ANU Alumni Week](#), CBE is delighted to launch the CBE Canberra Alumni Network (CBE CAN) – a new group aimed at connecting, supporting, and empowering our Canberra-based alumni.

- [Register now](#) to attend the CBE CAN launch.
- [Find out more](#) about the executive body behind this initiative.
- [Join CBE CAN](#) to be part of this great alumni-led group.

Alumni stories



Brothers in business

Brothers Joshua and Oscar Gonzalez, Founders and Directors of PKUP, talk business building.



Digital insurance: a global future

Sian Moon from iptiQ by Swiss Re in Hong Kong reflects on her professional growth and taking her career from ANU to the world.

Alumni initiatives



Access career support

CBE alumni can receive personalised career support up to three years after graduating. Get in touch with the CBE Careers team via careers.cbe@anu.edu.au, and get bespoke advice and guidance.



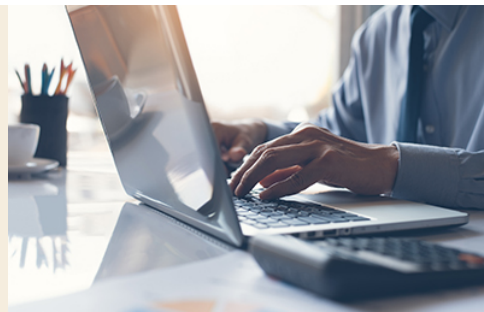
Information for employers

Let the CBE Careers and Student Employability team introduce you to our talented CBE students and graduates through on-campus and virtual events.



Share your knowledge and become a mentor

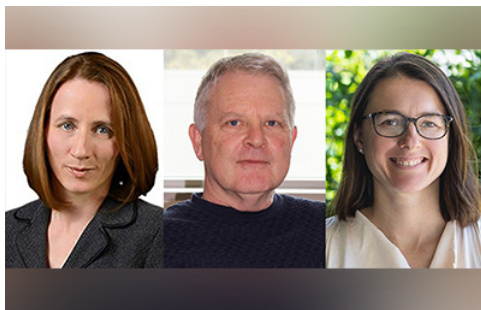
Be part of the College's flagship mentoring and professional development program – [MomentuM](#). Mentor EOIs are open. [Apply now](#).



Share your story

Many of our alumni have followed interesting careers paths. Please click [here](#) if this applies to you and you'd like to share your story.

Research highlights



Prestigious grants for CBE researchers

Two CBE-led proposals have secured funding through the ARC's Discovery Projects scheme.



The cost of distracted investors

CBE research examines whether institutional investor monitoring improves board performance.



Invest in tomorrow's financial leaders through the ANU Student Managed Fund (ANU SMF)

The ANU SMF is administrated by the ANU Research School of Finance, Actuarial Studies and Statistics (RSFAS), and enables students to enrol in a course where they manage actual money with the purpose of funding scholarships for disadvantaged students.

The ANU SMF was initially funded by a generous donation from Russell Clark, an ANU alumnus who completed his Bachelor of Economics and Bachelor of Asian Studies in 2000, and has since been supported further through contributions by others.

CBE hopes to grow the Fund and welcomes community support. Your generosity will enable the College to further develop the real-world investment experience that the SMF provides students.

[Donate now to the ANU SMF](#)

Find out more about the SMF via the course [webpage](#).



Supporting CBE

CBE recognises that we owe much of our students' successes to alumni, industry partners and other valuable stakeholders who provide them with fundamental learning experiences, and play a pivotal role in shaping their employment path.

There are many ways you can support the College.

- Scholarship and prize contributions
- Host an intern
- Become a mentor
- Co-host an event
- Be a guest speaker
- Explore partnership opportunities
- Share your experience in an alumni story

- Participate in a Special Industry Project

Please contact alumni.cbe@anu.edu for more information about supporting CBE through these opportunities.

Donations to the College will further enable us to facilitate these initiatives and help us to develop new ones.

Donate now to the ANU College of Business and Economics General Fund

Gifts may also be directed to our Research Schools if preferred.

- [Research School of Accounting Fund](#)
- [Research School of Economics Fund](#)
- [Research School of Finance, Actuarial Studies and Statistics Fund](#)
- [Research School of Management Fund](#)

Thank you for your support.

How do we best reach you?

Here is the information that we currently have on record for you:

Name:

Address:

Email:

Employer:

Position:

Moved house recently? Changed jobs? Please [update your details](#).

Note: If you have completed this form in the past 5-10 days, we'll be processing your update shortly, so no need to complete the form again.

Contact

alumni.cbe@anu.edu.au
cbe.anu.edu.au/alumni



The Australian National University,
Canberra

CRICOS Provider: 00120C
ABN: 52 234 063 906



You are receiving this email because you are a member of the CBE alumni mailing list. If you do not wish to receive future emails from us, please [unsubscribe](#). Mailchimp's [privacy policy](#) is available on their website.

Photo credits, top to bottom: Thai Chung, University of Queensland; Sian Moon; Nanyang Technological University; Gloria Jiang; Marie-Claire McGuffie; Jessica Morrison; Genrikh Salata;

Natalie Ho; SFIO CRACHO, Shutterstock.com; ANU Alumni Relations; Joshua Gonzalez Minero; Sian Moon; ANU College of Business and Economics; fizkes, Shutterstock.com; Andrew Taylor; Emma Schultz; ANU College of Business and Economics; TippaPatt, Shutterstock.com; ANU College of Business and Economics; The Australian National University.