



Australian
National
University

ANU College of Business and Economics (CBE) alumni update

Wishing you a safe and happy holiday season!



Rising stars



2021 Young Alumnus of the Year



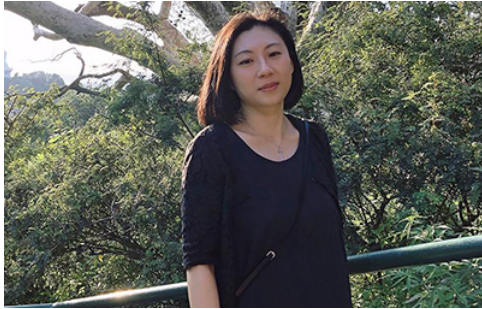
MCI takes out win in #COP26

CBE alumnus Afnan Hannan is recognised for his entrepreneurship and commitment to providing affordable electricity in Southeast Asia.

Pitch Battle

CBE alumna and Mineral Carbonation International's Chief Operating Officer, Sophia Hamblin-Wang, delivered the winning presentation.

Alumni stories



Talent spotting

Gloria Jiang shares insights on banking-industry recruitment in China.



Selling points

Senior Campaign Manager at MECCA Brands, Marie-Claire McGuffie, discusses all things retail marketing.



Headlines and deadlines

ABC's Seoul Correspondent, Carrington Clarke, provides a sneak peek into the working mind of a journalist.



Gold rush

Jessica Morrison reflects on her win at the Tokyo Olympic Games.



New Master of Management degree

Become an evidence-based decision maker, innovative problem-solver and future leader through the College's recently launched program in as little as one year. Apply now for Semester 1, 2022.

Alumni initiatives



Access career support

CBE alumni can receive personalised career support up to three years after graduating. Get in touch with the CBE Careers team via careers.cbe@anu.edu.au, and get bespoke advice and guidance.



Join the CBE Canberra Alumni Network (CBE CAN)

Launching in 2022, this network will facilitate further engagement amongst Canberra-based alumni. Members will be invited to attend local alumni events and access unique networking opportunities.



Information for employers

Let the CBE Careers and Student Employability team introduce you to our talented CBE students and graduates through on-campus and virtual events.



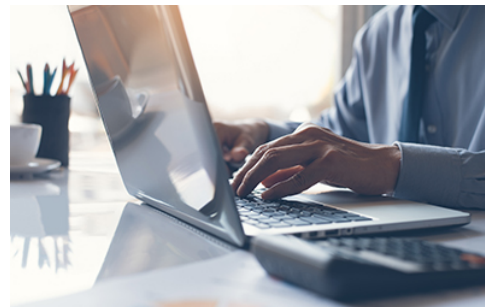
CBE GLOBE International Job Board

This exclusive job board promotes your internship and full-time job opportunities to CBE students, helping you identify top talent to complement your business.



Share your knowledge and become a mentor

Be part of the College's flagship mentoring and professional development program – [MomentuM](#). Mentor EOIs are open. [Apply now](#).



Share your story

Many of our alumni have followed interesting careers paths. Please click [here](#) if this applies to you and you'd like to share your story.

Research highlights



Is S&P 500 membership for sale?



Australia has ranked last in an international gender pay gap study

Research suggests that membership of the world's largest stock index could be driven by more than just financial performance.

CBE's Dr Anna von Reibnitz, Dr Jananie William, Dr Miriam Glennie, Dr Sally Curtis, and Associate Professor Sarbari Bordia highlight three ways to do better.



Invest in tomorrow's financial leaders through the ANU Student Managed Fund (ANU SMF)

The ANU SMF is administrated by the ANU Research School of Finance, Actuarial Studies and Statistics (RSFAS), and enables students to enrol in a course where they manage actual money with the purpose of funding scholarships for disadvantaged students.

The ANU SMF was initially funded by a generous donation from Russell Clark, an ANU alumnus who completed his Bachelor of Economics and Bachelor of Asian Studies in 2000, and has since been supported further through contributions by others.

CBE hopes to grow the Fund and welcomes community support. Your generosity will enable the College to further develop the real-world investment experience that the SMF provides students.

[Donate now to the ANU SMF](#)

Find out more about the SMF via the course [webpage](#).



Supporting CBE

CBE recognises that we owe much of our students' successes to alumni, industry partners and other valuable stakeholders who provide them with fundamental learning experiences, and play a pivotal role in shaping their employment path.

There are many ways you can support the College.

- Scholarship and prize contributions
- Host an intern
- Become a mentor
- Participate in a Special Industry Project
- Co-host an event
- Be a guest speaker
- Explore partnership opportunities
- Share your experience in an alumni story

Please contact alumni.cbe@anu.edu for more information about supporting CBE through these opportunities.

Donations to the College will further enable us to facilitate these initiatives and help us to develop new ones.

Donate now to the ANU College of Business and Economics General Fund

Gifts may also be directed to our Research Schools if preferred.

- [Research School of Accounting Fund](#)
- [Research School of Economics Fund](#)
- [Research School of Finance, Actuarial Studies and Statistics Fund](#)
- [Research School of Management Fund](#)

Thank you for your support.

How do we best reach you?

Here is the information that we currently have on record for you:

Name:

Address:

Email:

Employer:

Position:

Moved house recently? Changed jobs? Please [update your details](#).

Note: If you have completed this form in the past 5-10 days, we'll be processing your update shortly, so no need to complete the form again.

Contact

alumni.cbe@anu.edu.au
cbe.anu.edu.au/alumni



The Australian National University,
Canberra

CRICOS Provider: 00120C
ABN: 52 234 063 906



You are receiving this email because you are a member of the CBE alumni mailing list. If you do not wish to receive future emails from us, please [unsubscribe](#). Mailchimp's [privacy policy](#) is available on their website.

Photo credits, top to bottom: The Australian National University; ANU Advancement; Jack Fox; Gloria Jiang; Marie-Claire McGuffie; Mitchell Woolnough; Rowing Australia; SFIO CRACHO, Shutterstock.com; The Australian National University; ANU Advancement; fizkes, Shutterstock.com; The Australian National University; The Australian National University; TippaPatt, Shutterstock.com; Jirapong Manustrong, Shutterstock.com; Monkey Business Images, Shutterstock.com; ANU College of Business and Economics; The Australian National University.