

# ANU College of Business and Economics



Australian  
National  
University

Building exceptional employability  
skills through alumni and industry  
partnerships.

Informing and engaging students, alumni and  
industry partners.



ANU College of  
Business and  
Economics



Fizkes/Shutterstock.com



Australian  
National  
University

The ANU College of Business and Economics (CBE) is committed to ensuring its students become well-rounded graduates who are ready for what lies ahead in their working lives.

While CBE strives for world-leading academic and research outcomes, it also values skill development outside the classroom. The dedicated CBE Careers and Student Employability team supports current students and recent graduates in building critical job competencies, and applying them in the professional world.

We owe much of the College’s success in this space to the support of our extensive global alumni network and industry partners, who provide our students with myriad opportunities across Australia and overseas, and play a pivotal role in shaping their employment path.

As a College, we are proud of the achievements of our graduates and look forward to continuing to work with them and our government and business stakeholders to best prepare our students for their eventual careers.

**Professor Steven Roberts**  
Dean, ANU College of Business and Economics

C O N T E N T S

About CBE	3
Research schools	4
CBE Careers and Student Employability	5
Internship Program	7
Special Industry Project	9
MomentuM Program	12
CBE invites you to join our community	13
Get ahead with a postgraduate qualification	14
Industry partners	15
Alumni	16



# About CBE

The Australian National University (ANU) ranks among the world’s finest universities as it invests in, and insists on, quality research and education. CBE embodies these values and is committed to a culture of academic excellence.

At CBE, the strength of our international reputation attracts exceptional students from Australia, the wider Asia–Pacific region and beyond.

Our programs cover a wide spectrum of subject areas within business and economics. Students are offered a full suite of engaged learning opportunities to enhance their employability skills and globalise their education experience.

Through their studies, our graduates gain the knowledge required to lead organisations, develop public policy, create new companies and undertake research. Our alumni can be found in the world’s leading companies, policy agencies and universities.

### Globally recognised skills

There is a high demand for business and economics graduates around the world. CBE provides our students and recent graduates with skills and attributes that will remain relevant and keep them competitive in the evolving job-market.

### The student journey

ANU offers a range of services to ensure our students succeed at university.

- » Academic workshops.
- » Program advice sessions.
- » Student networking events.
- » Orientation programs such as Set4ANU.
- » Student clubs and societies.

### World of opportunities

Students are able to study overseas as a part of their degree, where they will gain insights into how to form a global network and expand their career options.

- » CBE Global Business Immersion.
- » ANU Exchange Program.
- » IARU Courses.
- » PRIMO: First year learning abroad programs.
- » Student Managed Fund.
- » Overseas summer/winter short courses.

### Community of business leaders

Our graduates are lifelong members of our global alumni community.

- » We have over 35,000 alumni.
- » Our alumni work and live in 90+ countries.
- » Our graduates are consistently ranked as some of the most employable in Australia\*.

### Real-world experience

Our programs offer real-world experience through innovative course design, and award-winning internships and professional development programs.

- » CBE Internship Program.
- » CBE Special Industry Project.
- » MomentuM Professional Development Program.

### Job ready

Students and recent graduates are provided opportunities to expand their professional skills and become job ready.

- » Industry networking events.
- » Career fairs.
- » Employer and alumni-led events.
- » Professional skills and career workshops.
- » Career consultations.
- » Job listings.

\*QS World University Rankings 2019.

# Research schools

Within CBE there are four research schools.

## ANU Research School of Accounting

The ANU Research School of Accounting has an excellent international reputation and is one of the leading providers of accounting education in the world. Our outstanding undergraduate and postgraduate programs exemplify excellence and innovation, and provide a rewarding experience for students preparing for professional and research careers.

## ANU Research School of Economics

The ANU Research School of Economics offers a suite of renowned and specialised programs that will equip students for a vast range of careers in economics. Widely published in leading economics journals, our academics have received many awards and grants for their scholarship and the quality of their teaching.

## ANU Research School of Finance, Actuarial Studies and Statistics

The ANU Research School of Finance, Actuarial Studies and Statistics is the University’s home of research and education in these three fields. We are a designated Centre of Actuarial Excellence by the Society of Actuaries and are accredited by prestigious industry bodies, including the Chartered Financial Analysts Institute, Actuaries Institute, and Statistical Society of Australia.

## ANU Research School of Management

The ANU Research School of Management develops successful and resilient leaders with the knowledge, skills and capabilities needed to make a difference in organisations and society. Our unique approach to management education is informed by relevant, important and impactful research that addresses the challenges related to managing in a complex and rapidly-changing world.

# CBE Careers and Student Employability

CBE Careers and Student Employability is a dedicated team of career consultants and staff who can assist with your search for high-calibre talent. Our focus is to connect industry and employers to our CBE students and alumni.

We actively engage with our students and alumni and offer a range of career development initiatives that build professional skills. The team are able to identify candidates with outstanding academic qualifications and exceptional professional skills to complement your business and enhance the goals of your organisation.

Our wide range of services support the College's core strategic vision of creating a holistic educational experience, which goes beyond the classroom and helps to prepare our students for the Australian and international workplace.

The CBE Careers and Student Employability team can connect you with talented CBE students and alumni through numerous, valuable events.

## Mock assessment centres

Mock assessment centres are promoted to penultimate and final year CBE students preparing for graduate roles. They provide students an opportunity to practice their skills and receive individual feedback on their performance.

## Career fairs

We coordinate career fairs each year for employers to promote internships, casual, part-time, and full-time employment, and graduate program opportunities.

## Case competitions

Case competitions enable organisations to propose real-business problems to high-performing students, who use their problem-solving skills to research and deliver innovative solutions in a competitive forum.

## Hiring manager perspective workshops

These workshops provide an opportunity for recruitment specialists or hiring managers to deliver a presentation about their recruitment process in the lead up to graduate recruitment season, and to promote the upcoming graduate program and internship opportunities they have available.

## Industry-led professional skills workshops

These workshops allow industry leaders to contribute to building students' employability and professional development skills, as well as promote their employment opportunities and insights into the organisation.

## Practice with the Pros: Industry-led mock interviews

Meet with students actively seeking graduate program and internship opportunities through our interactive mock interviews. Industry partners can help students practice behavioural-based questions and grow their talent pipeline.

## Employer meet-ups

Employer meet-ups involve 30-minute to one-hour presentations from domestic and international employers promoting their internship and graduate programs to CBE students.

## Employer treks

Employer treks provide students with opportunities to travel and engage with business leaders, learn about key industries, and meet with industry partners and CBE Alumni. Students spend a day with industry to learn about the organisation, professional skills required for industry and network with leadership.

## Alumni career talks

Alumni at all career stages share their career journey and experience in different industries and locations to current students. Students learn from our alumni about the tips and tricks to enter and thrive in a range of professions as well as the factors driving career satisfaction and success.

## Promote your organisation

Share details about your organisation, including its internships, graduate program and employment opportunities, with our students and alumni.

### ANU CareerHub

Promote your internship and employment opportunities with a free advertisement on the University's job board, which is viewable to all our current students and recent alumni.

### CBE Careers' newsletter

Create brand awareness and highlight employment opportunities through our weekly newsletter that reaches over 7,000 current students.

### CBE Careers and Employability Facebook group

Have your organisation and opportunities endorsed through our CBE Careers and Employability Facebook group.

### Targeted advertising

Advertise jobs to CBE students based on their academic program and location to help you identify the best talent for your organisation.

### Further information

Visit the CBE Careers and Student Employability webpage: [cbe.anu.edu.au/current-students/opportunities-and-careers/cbe-careers/](https://cbe.anu.edu.au/current-students/opportunities-and-careers/cbe-careers/)

or contact us for further information: [careers.cbe@anu.edu.au](mailto:careers.cbe@anu.edu.au)





# Internship Program

The CBE Internship Program is a great for-credit initiative that enables Canberra-based business partners to gain access to a pool of high-achieving and talented ANU students, for short-term projects and subsequent graduate positions or employment opportunities.

The program won the Silver Award (Oceania Region) at the 2016 Reimagine Education Awards and was a finalist at the 2017 Australian Financial Review Higher Education Awards (Employability Category).

It involves a select group of students committing 120 or 240 hours (12 or 24 hours per week over 10 weeks) to industry internship projects for course credit. The internships contribute to developing the employability skills of our students, who can undertake value-adding activities for their internship hosts. Each internship is covered by an ANU Internship Agreement, including clauses for insurance coverage, non-disclosure of confidential information, IP protection, and an internship schedule.

Industry partners benefit from fresh perspectives based on research-led education, as well as having the opportunity to assess students first-hand for graduate and ongoing employment.

We would be delighted to work with partners across public, private, and not-for-profit sectors in Canberra. Suitable projects can be either research-based or operational-based in any discipline areas related to business and economics.

There are two intakes each year, coinciding with Semester 1 (February – May) and Semester 2 (July – October).

## Candidate selection

Internship hosts are able to select high-achieving and talented undergraduate and/or postgraduate students studying in various fields.

- » Accounting.
- » Actuarial Studies.
- » Business Administration.
- » Business Information Systems.
- » Corporate Sustainability.
- » Economics.
- » Finance.
- » International Business.
- » Marketing.
- » Management.
- » Project Management.
- » Statistics.

The CBE Careers and Student Employability team is responsible for advertising the internships and managing the application process. Each internship host will make the final decisions to select their preferred intern(s) for each project.

All interns are required to complete a compulsory 'pre-placement' induction program provided by CBE before commencing their placements.

## Assessment by the workplace supervisor

The workplace supervisor is responsible for mentoring the intern(s) at work and reviewing their performance twice (half-way through the placement and at the conclusion of the placement).

## Remuneration

Internships can be paid or unpaid.

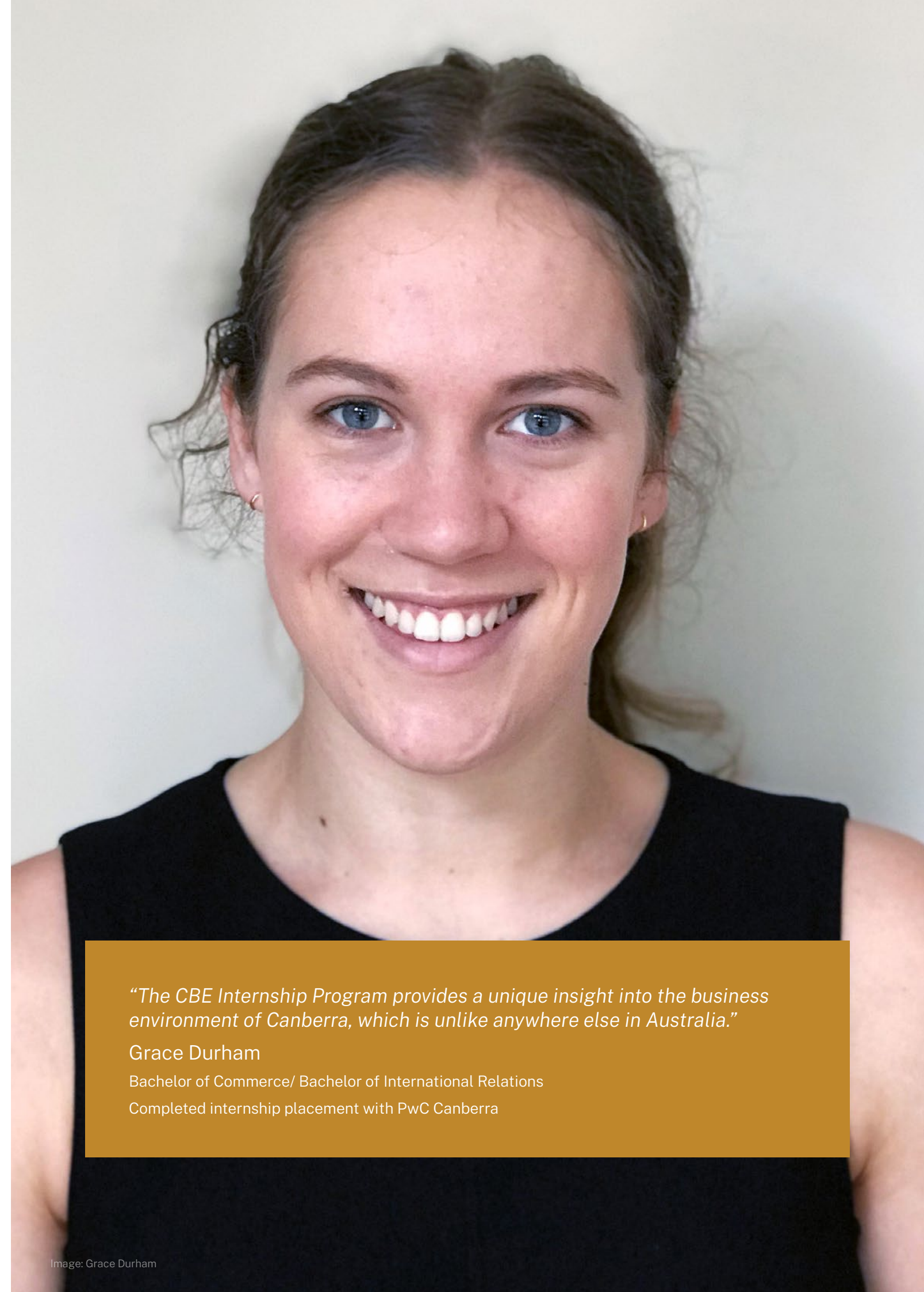
For paid internships, internship hosts can choose to employ the intern(s) on a casual basis over the internship period.

For unpaid internships, internship hosts can choose to offer a stipend award (or not) to the intern(s) at the completion of their placement as a travel and meal allowance. The value of the stipend award can range from \$1,000 to \$5,000 and goes directly to the intern(s).

## Further information

Visit the CBE Internship Program webpage:  
[cbe.anu.edu.au/about/partner-with-us/hosting-internships](https://cbe.anu.edu.au/about/partner-with-us/hosting-internships)

or contact us for further information:  
[internship.cbe@anu.edu.au](mailto:internship.cbe@anu.edu.au)



*“The CBE Internship Program provides a unique insight into the business environment of Canberra, which is unlike anywhere else in Australia.”*

Grace Durham

Bachelor of Commerce/ Bachelor of International Relations

Completed internship placement with PwC Canberra



# Special Industry Project

The CBE Special Industry Project (SIP) aims to create and mimic the real-world consulting environment, providing opportunities for students to take on the role of consultant whilst addressing and solving current business issues.

SIP is a demanding and rigorous course that requires a high level of commitment and quality output from participating students, who form teams to complete their projects. Each team is given 10 weeks over a semester to produce original work and devise the best solution for a given business case. By the end of the semester, each team is expected to produce a final report and pitch their ideas to a panel of three to five executives from the client organisation.

The program is run in Semester 1 (February–May) and Semester 2 (July–October) each year, and is for all ANU undergraduate students, including exchange students.

## Structure

SIP involves two industry partners.

One industry partner will act as the 'client' and will provide the relevant business issue or opportunity that students will design and develop a solution for. The client can be from any industry and based anywhere around the world.

A second industry partner from within the consulting industry in Canberra will contribute staff as 'mentors' for the students. The mentors will be in regular contact with the students and supervise each team, supporting the quality and applicability of their outputs as they develop their final reports. (Note: Mentors do not contribute ideas for solutions, but simply support the critical thinking and creative problem-solving process.)

## Benefits for industry partners

- » Directly impacting the skill development of ANU students so they can meet changing workforce needs.
- » Access to a large base of students studying in the areas of business and economics across ANU through networking and career development events.
- » Goodwill generated through internal and external communication about the partnership with ANU.
- » High-quality business solutions under the supervision of a mentor industry partner.

## Contributions from industry partners

SIP is intended to be highly competitive with the anticipated output to be practical and applicable to an organisation's issue, providing a product equal in quality to that of a paid consulting team. We request that a reward is offered to the winning team to commend their achievement. Potential prizes could be:

- » a cash stipend award in your organisation's name (for winning team)
- » an all expenses paid trip to your HQ to pitch to executives
- » internship placement(s) within your organisation
- » a prize of your suggestion.

## Previous industry clients

- » Unilever.
- » Community Living Australia.
- » NAB.
- » St John Ambulance.
- » Meat and Livestock Australia.
- » Royal Australian Mint.
- » Twofold Aboriginal Corporation.
- » Commonwealth Superannuation Corporation.

## Further information

Visit the SIP webpage:

[cbe.anu.edu.au/study/cbe-special-industry-project-course](https://cbe.anu.edu.au/study/cbe-special-industry-project-course)

or contact us for further information:

[employability.cbe@anu.edu.au](mailto:employability.cbe@anu.edu.au)

*"The Special Industry Project offered me an opportunity to work on a real-life business case, accumulating consulting experience and creating an impact. Prior to this program, I was unsure about the nature of consulting and what being a consultant would be like. I have now become very interested in this field and would like to explore it as a career."*

Xinglin Li

Bachelor of Accounting/ Bachelor of Laws (Honours)

Completed Special Industry Project with the Royal Australian Mint





*“The most valuable part of MomentuM was how insightful my mentor was in relation to their workplace; he allowed me to be fully immersed within his professional world.”*

James Footit

Bachelor of Commerce/ Bachelor of Science (Psychology)

Completed Momentum Program

# MomentuM Program

MomentuM is the College’s flagship mentoring and professional development program.

MomentuM is an intensive, not-for-credit professional development program for CBE students. It incorporates developmental milestones, interactive networking workshops and industry mentoring to develop the professional skills and attributes essential in today’s job-market. MomentuM is one of the ways in which CBE prepares students to successfully navigate the professional landscape.

## MomentuM mentors

The CBE MomentuM program is open to industry professionals who typically have three or more years of professional workforce experience and who have a willingness to share their time, expertise and experience.

A MomentuM mentor possesses the following attributes:

- » genuine desire to share knowledge, expertise and experience
- » willingness to invest time and effort in your mentoring partnership, respect the mentees commitment and fulfil the agreed program commitments
- » ability to recognise and encourage your mentees potential
- » ability to provide and receive constructive and honest feedback
- » commitment to supporting your mentee by listening, sharing and reviewing options.

## Benefits of being a mentor

The benefits of sharing your knowledge and providing support and guidance to the next generation of business leaders are vast.

Through your participation in MomentuM, you may:

- » enhance your leadership and communication skills
- » demonstrate your mentoring, coaching and interpersonal skills
- » be challenged or gain a ‘fresh’ perspective from the next generation
- » connect with industry peers and increase your professional network
- » obtain personal satisfaction in making a significant difference to your mentee’s career and professional development.

## MomentuM partners

Previous industry workshop partners include:

- » EY
- » Polis Partners
- » Sport Australia
- » Black Bull Performance Group.

## Further information

Visit the MomentuM webpage:

[cbe.anu.edu.au/study/cbe-momentum-program](https://cbe.anu.edu.au/study/cbe-momentum-program)

or contact us for further information:

[momentum.cbe@anu.edu.au](mailto:momentum.cbe@anu.edu.au)

# CBE invites you to join our community.

Engage with our world-class academic staff, who are some of the leading experts in their fields, through the many opportunities and connections available to you at CBE.

## Students

CBE's internationally regarded postgraduate coursework degrees incorporate all of the College's strengths and provide flexible study options.

## Partners

We are committed to working in partnership with business, government and not-for-profit organisations, to achieve real-world impacts and create a competitive advantage for our partner organisations.

## Alumni

Our alumni display a depth of character and high-calibre that we have come to associate with those studying at and graduating from CBE. They make significant contributions to their professions and societies across the globe.

## Get ahead with a postgraduate qualification

### Workforce ready

CBE graduates are equipped for the opportunities and challenges of the modern workforce, making them highly sought after by employers. Working in a wide range of industries, our alumni possess a global outlook and practical skills that are strengthened through the College's diverse range of professional development experiences.

### A superior, research-led education

Through study with CBE, you will have the opportunity to learn from some of the finest academic minds in the world. You will explore intricate ideas; gain skills to critically analyse and solve complex problems; and discover innovative leadership styles and new models of management. You will acquire the knowledge, experience and skills to become a leader.

### Get connected

Building a network that you can rely on takes more than hard work. CBE attracts exceptional and talented people from Australia, the wider Asia-Pacific region and the world. As a CBE student, you will have opportunities to build your professional networks, giving you the competitive edge when it comes to advancing your career. Many of our courses are developed in consultation with industry partners to ensure that the skills and knowledge you acquire through your study can be applied to real-world situations.

### Further information

Visit the postgraduate study webpage: [cbe.anu.edu.au/study/postgraduate](https://cbe.anu.edu.au/study/postgraduate)





# Industry partners

Work with world-leading academics whose research outcomes can improve organisational efficiency, financial returns and policy efficacy.

## What do partnerships with CBE look like?

Our academics can provide expert advice, generate new research and conduct large-scale social experiments. We work collaboratively to ensure that all parties have clear goals and metrics for success.

We also encourage industry and government professionals to engage with our students through training and development opportunities.

## Where do I start?

Contact us to let us know a little about your area or arrange a time to meet and discuss options further.

### Consultation

Our staff can work with you in a consulting capacity and apply academic rigour and expertise to help your organisation develop solutions to your pressing business challenges.

For more information, please contact CBE Research Engagement: [engagement.cbe@anu.edu.au](mailto:engagement.cbe@anu.edu.au)

### Long-term projects

CBE academics push the boundaries of knowledge through their cutting-edge research. Collaborate with us to leverage research to create impact and achieve long-term strategic goals for your organisation.

For more information, please contact CBE Research Engagement: [engagement.cbe@anu.edu.au](mailto:engagement.cbe@anu.edu.au).

### HDR student projects

Participate in training tomorrow's workforce through industry-based courses, Honours, Masters or PhD programs and scholarship stipends. This also gives you access to academic expertise through working with academic supervisors with the students.

For more information, please contact Education Office: [education.cbe@anu.edu.au](mailto:education.cbe@anu.edu.au)

### Internships, mentoring and other programs

Our staff can work with you in a consulting capacity and apply academic rigour and expertise to help your organisation develop solutions to your pressing business challenges.

For more information visit: [cbe.anu.edu.au/about/partner-with-us/hosting-internships](https://cbe.anu.edu.au/about/partner-with-us/hosting-internships)

# Alumni

The CBE alumni community have access to an innovative and engaged CBE Careers team.

No matter where you are on your career journey, the CBE Careers and Student Employability team are here to support your professional development through one-on-one consultations, networking events, workshops, and more.

Our Career Consultants are ready to help you successfully navigate your professional life and achieve employment success in the global market.

To book an appointment to discuss your job search with a CBE Career Consultant, contact [careers.cbe@anu.edu.au](mailto:careers.cbe@anu.edu.au).

The team also offers professional-development workshops and career events throughout the academic year and can provide assistance with:

- » job search strategies
- » resume reviews
- » interview preparation
- » LinkedIn profile reviews.

Be sure to reach out to the team despite having completed your studies.

We encourage our alumni to remain engaged with the College and University, and share their expertise with the students who will follow in their footsteps.

CBE alumni can assist current students by:

- » delivering career-related workshops on campus or virtually
- » mentoring students and sharing their career trajectories
- » offering internships and graduate jobs in Australia or overseas
- » hosting corporate site visits for small groups.

Students learn a great deal from the alumni community. Please reach out and join CBE in strengthening the ongoing success of our employability initiatives.

## Further information

Visit the alumni webpage: [cbe.anu.edu.au/alumni](https://cbe.anu.edu.au/alumni)

or contact us for further information: [alumni.cbe@anu.edu.au](mailto:alumni.cbe@anu.edu.au)



Australian  
National  
University

## Contact us

### **ANU College of Business and Economics**

Building 26C, Kingsley Street

The Australian National University

Canberra ACT 2600

W [cbe.anu.edu.au](http://cbe.anu.edu.au)



[facebook.com/ANUBusinessEconomics](https://facebook.com/ANUBusinessEconomics)



[@ANU\\_CBE](https://twitter.com/ANU_CBE)



[@ANU\\_CBE](https://www.instagram.com/ANU_CBE)



[/school/anu-college-of-business-and-economics](https://www.linkedin.com/school/anu-college-of-business-and-economics)