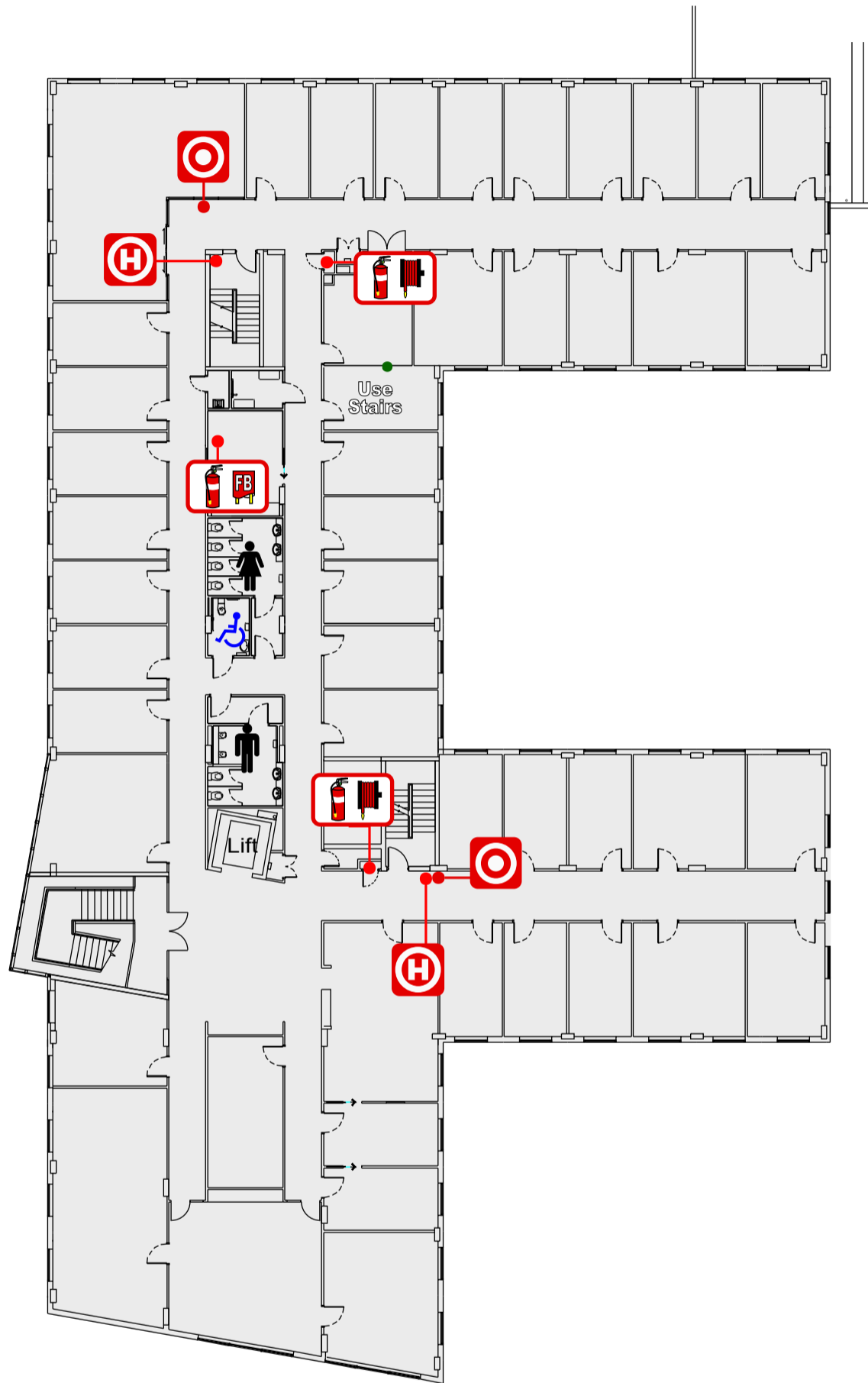




### Fire-fighting equipment

- Fire Extinguisher DCP
- Fire Blanket
- Fire Hose Reel
- Fire Hydrant
- Manual Call Point Red Break Glass

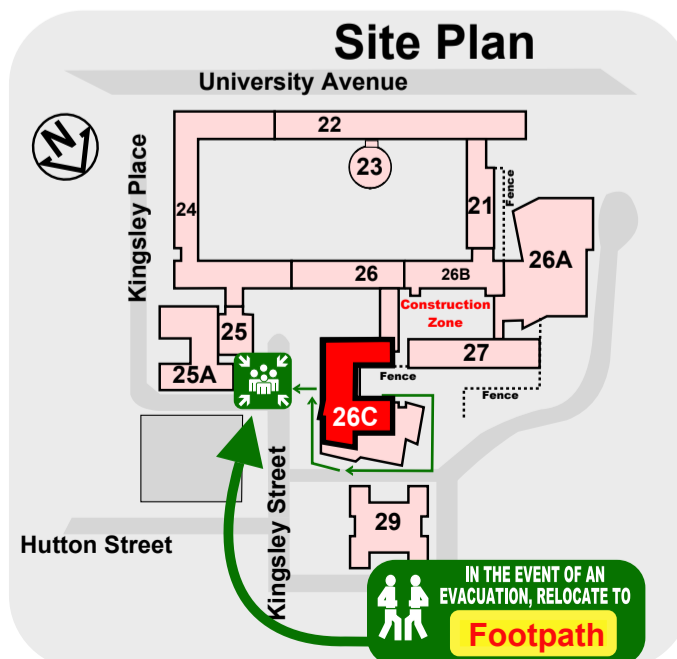
### Assembly area



## EMERGENCY PROCEDURES

- R** REMOVE people from the immediate danger.
- A** ALERT all people nearby. RAISE AN ALARM - DIAL 000
- C** CONFINE the Smoke and Fire, attempt to extinguish the fire if safe and trained to do so.
- E** EVACUATE the building and proceed to the Assembly Area

**ANU Security 6125 2249 (X52249)**  
**Then press 1 for emergency priority**



**FOR ALL EMERGENCY SERVICES**  
**Dial 000**  
**FOR ALL EMERGENCIES CONTACT SECURITY**  
**Dial 52249**  
**TEXT EMERGENCY CALL**  
**Dial 106**



Date issued: 24 October 2017  
 Review Date: October 2022  
 Version: 1.1  
 Ref: C237-1273