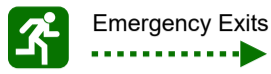
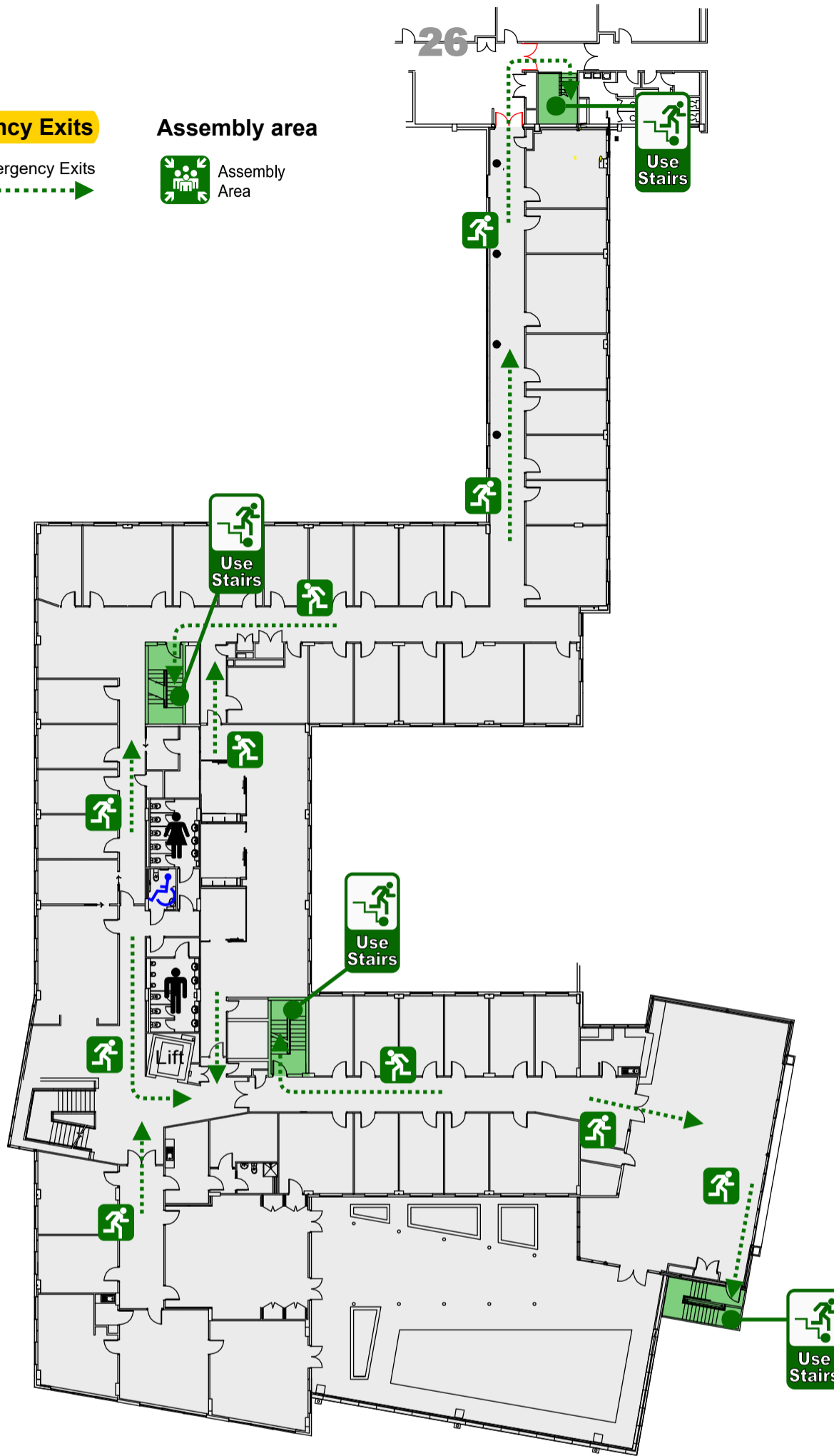




Emergency Exits



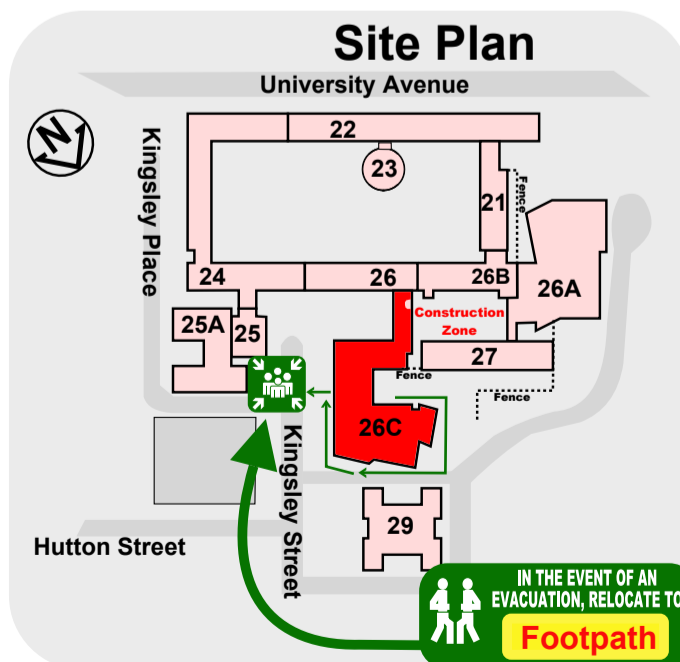
Assembly area



EMERGENCY PROCEDURES

- R** REMOVE people from the immediate danger.
- A** ALERT all people nearby. RAISE AN ALARM - DIAL 000
- C** CONFINE the Smoke and Fire, attempt to extinguish the fire if safe and trained to do so.
- E** EVACUATE the building and proceed to the Assembly Area

ANU Security 6125 2249 (X52249)  
Then press 1 for emergency priority



FOR ALL EMERGENCY SERVICES  
**Dial 000**  
 FOR ALL EMERGENCIES CONTACT SECURITY  
**Dial 52249**  
 TEXT EMERGENCY CALL  
**Dial 106**



Date issued: 24 October 2017  
Review Date: October 2022  
Version: 1.1  
Ref: C237-1273